



PERFORMANCE LOCKERS

BeaverFit Performance Lockers are standard shipping containers custom-fabricated to anchor BeaverFit Training Rigs and store the equipment necessary to create world class multi-modality training centers. The Lockers can be customized to meet any training need and come in 6 standard sizes and 2 inner shelving configurations with either standard or custom accessory equipment packages.

Our Performance Lockers are used extensively by the US Military, Fortune 500 Corporations, CrossFit™ Boxes and World Class Human Performance Training Centers. BeaverFit Lockers expand the footprint and effectiveness of training facilities, create outdoor training options and provide fully deployable solutions to enable training in locations never before possible.

The Performance Lockers are available with standard BeaverFit attachments (J-cups, safety squat arms, dip bars, jump platforms, landmines and wall ball targets) and an accessory load out of battling ropes, climbing ropes, medicine balls, kettlebells, Olympic bars, warm up bars, bumper plates, sand bags, benches, mobility equipment, gymnastic rings and jump ropes.

**BEAVERFIT™**  
HUMAN PERFORMANCE



## LOCKER SIZES

- 5' Ideal for training up to 30 people
- 8' Ideal for training up to 50 people
- 10' Ideal for training up to 50 people
- ISU 90 Custom design for US Military
- 20' Ideal for training up to 80 people
- 40' Ideal for training up to 120 people

**BEAVERFIT™**  
HUMAN PERFORMANCE



5'



## THE 5' PERFORMANCE LOCKER

### FEATURES & OPTIONS

#### OVERVIEW

The 5' Performance Locker is a standard QUADCON shipping container, custom-fabricated to anchor a BeaverFit functional training rig and store the equipment necessary to create a world class, multi-modality training center for up to 30 people.

#### 12' ROPE CLIMB TOWER

- Includes 1.5" thick rope

#### ACE BAR

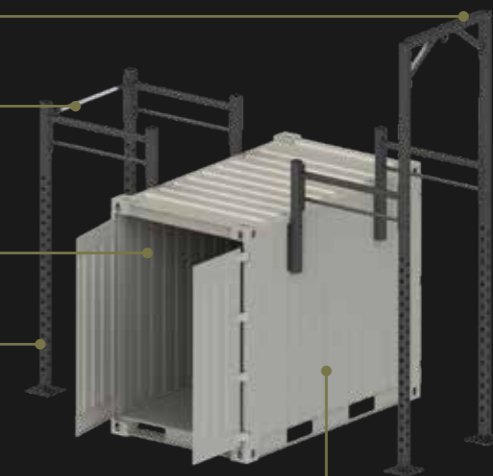
- Stainless steel
- Bead blasted for superior grip

#### AMPLE STORAGE

- Container can be secured with rig assembled
- Certified Air Portable

#### TWO SQUAT RACKS

- Compatible with all BeaverFit rig attachments



#### 5 PULL UP STATIONS

- Train simultaneously

CUSTOM BRANDING AVAILABLE



5'  
MB



## THE 5' MOBILE PERFORMANCE LOCKER

### FEATURES & OPTIONS

#### OVERVIEW

The 5' Mobile Performance Locker is the most portable BeaverFit training solution available. The 5' Locker is integrated into a custom-built trailer and allows you to train anywhere you can drive an SUV or tactical vehicle. It is perfect for workouts in the park, in the field, or anywhere your vehicle can go. This mobile world-class training facility can train up to 30 athletes.

#### 12' ROPE CLIMB TOWER

- Includes 1.5" thick rope

#### TWO PULL UP BARS

- Powder coated
- Easy assembly

#### TWO SQUAT RACKS

- Compatible with all BeaverFit rig attachments



8'



## THE 8' PERFORMANCE LOCKER

### FEATURES & OPTIONS

#### OVERVIEW

The 8' Performance Locker is a standard TRICON shipping container, custom-fabricated to anchor a BeaverFit functional training rig and store the equipment necessary to create a world class, multi-modality training center for up to 50 people.

#### 12' ROPE CLIMB TOWER

- Includes 1.5" thick rope

#### ACE BAR

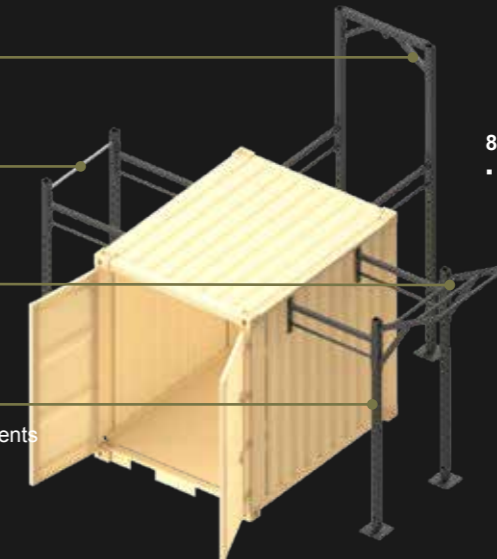
- Stainless steel
- Bead blasted for superior grip

#### CLIMBING WINGS

- Angled 3-bar bracket
- Powder coated

#### THREE SQUAT RACKS

- Compatible with all BeaverFit HP attachments



#### 8 PULL UP STATIONS

- Train simultaneously



10'



## THE 10' PERFORMANCE LOCKER

### FEATURES & OPTIONS

#### OVERVIEW

The 10' Performance Locker is a standard BICON shipping container, custom-fabricated to anchor a BeaverFit functional training rig and store the equipment necessary to create a world class, multi-modality training center for up to 50 people.

#### 12' ROPE CLIMB TOWER

- Includes 1.5" thick rope

#### THREE SQUAT RACKS

- Compatible with all BeaverFit HP attachments

#### CLIMBING WINGS

- Angled 3-bar bracket
- Powder coated



#### 12 PULL UP STATIONS

- Train simultaneously





# ISU-90

## FEATURES & OPTIONS

### OVERVIEW

The ISU-90 Performance Locker was custom designed for the US Military Special Forces community. This Locker is built on the unique ISU-90 shipping container, which has been custom-fabricated to anchor a BeaverFit training rig and store the equipment necessary to create a world-class, multi-modality training center for up to 50 athletes.

#### 12' ROPE CLIMB TOWER

- Includes 1.5" thick rope

#### ACE BAR

- Stainless steel
- Bead blasted for superior grip

#### CLIMBING WING

- Angled 3-bar bracket
- Powder coated



#### 8 PULL UP STATIONS

- Train simultaneously





# THE 20' PERFORMANCE LOCKER

## FEATURES & OPTIONS

### OVERVIEW

The 20' Performance Locker is the most popular BeaverFit Performance Locker in North America; originally designed to support the United States Marine Corps in 2013. This Locker is built on a standard 20' CONEX shipping container, custom-fabricated to anchor a BeaverFit training rig and store the equipment necessary to create a world-class, multi-modality training center for up to 80 athletes.

#### 12' ROPE CLIMB TOWER

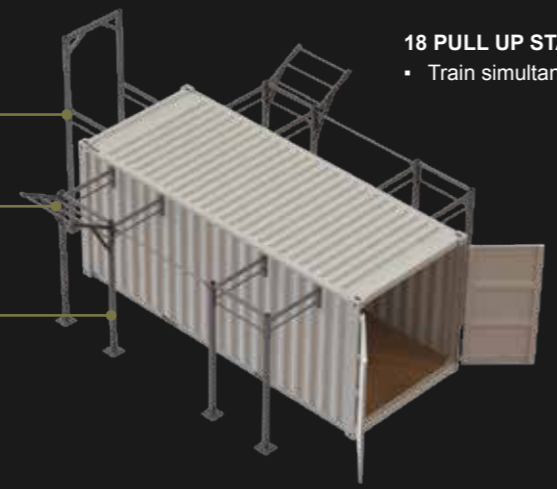
- Includes 1.5" thick rope

#### CLIMBING WINGS

- Angled 3-bar bracket
- Powder coated

#### FIVE SQUAT RACKS

- Compatible with all BeaverFit HP attachments

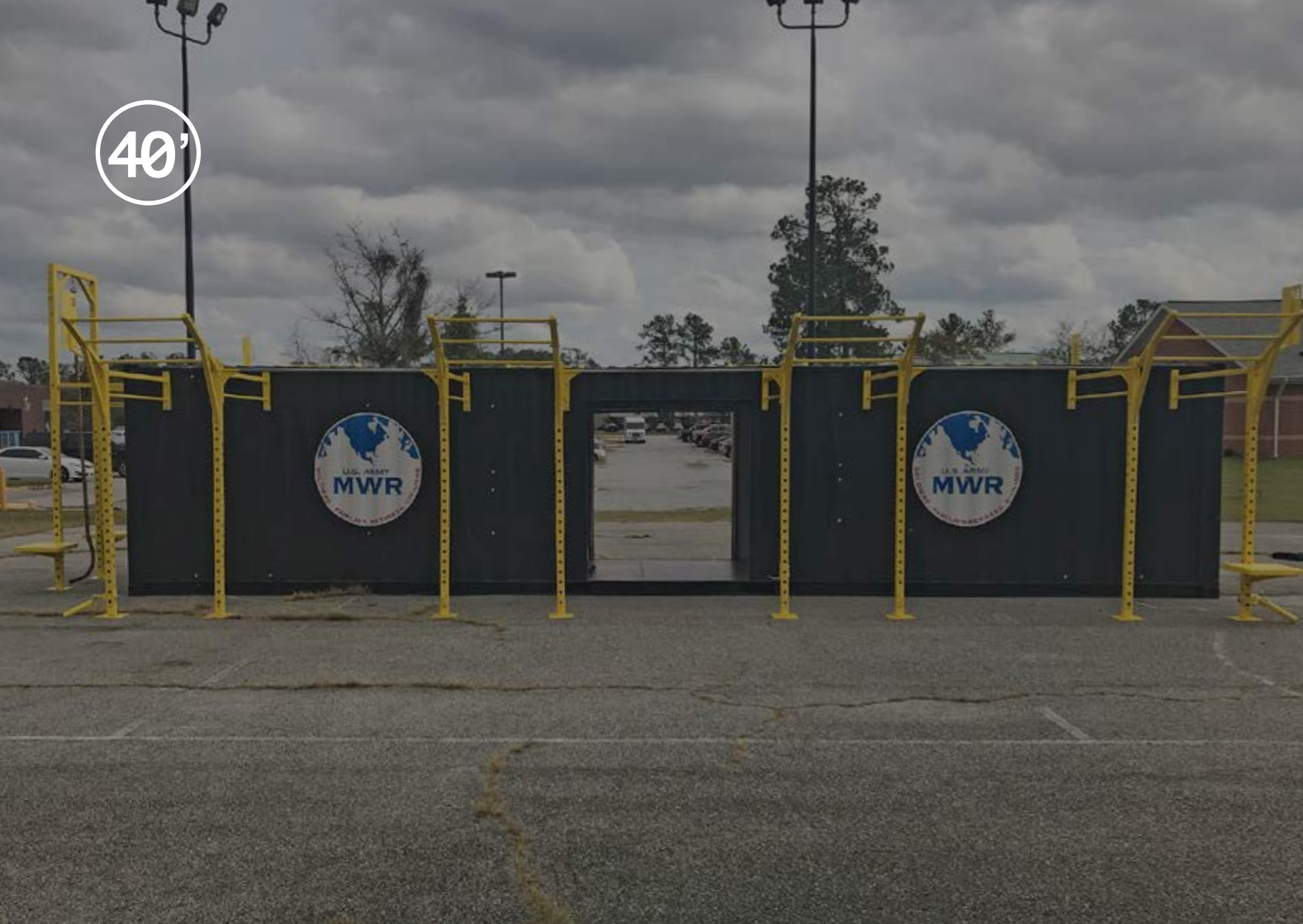


#### 18 PULL UP STATIONS

- Train simultaneously



40'



## THE 40' PERFORMANCE LOCKER

### FEATURES & OPTIONS

#### OVERVIEW

The 40' Performance Locker is BeaverFit's largest Performance Locker and is designed as a semi-permanent training center for up to 120 athletes.

#### 30 PULL UP STATIONS

- Train simultaneously

#### ACE BAR

- Stainless steel
- Bead blasted for superior grip

#### CLIMBING WINGS

- Angled 3-bar bracket
- Powder coated

#### EIGHT SQUAT RACKS

- Compatible with all BeaverFit HP attachments



## INNERS: ALPHA

### FEATURES & OPTIONS

#### OVERVIEW

Intended for customers that will break down the Locker and move it often to various locations.



## INNERS: BRAVO

### FEATURES & OPTIONS

#### OVERVIEW

Intended for customers that will have the Locker remain stationary.



## GYM BOX: SINGLE RACK

### FEATURES & OPTIONS

#### OVERVIEW

The Gym Box - Single Rack is the most portable and versatile product in the BeaverFit training line, enabling multi-modality functional training in confined space and deployed, expeditionary environments. The Single Rack fits easily in the back of a SUV and can be carried by two people.



## GYM BOX: DUAL RACK

### FEATURES & OPTIONS

#### OVERVIEW

The Gym Box - Dual Rack is as portable and versatile as the Single Rack, enabling multi-modality functional training in confined space and deployed, expeditionary environments. The Dual Rack features a unique modular design, increased cubic storage space, and is small enough to fit inside a HMMWV or SUV.





## CUSTOMIZED LOCKERS

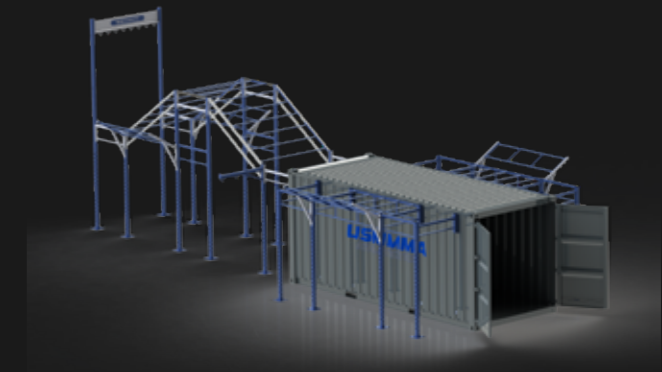
### FEATURES & OPTIONS

#### OVERVIEW

The Performance Locker, BeaverFit's patented flagship product, is available in both standard and customized configurations. With the ability to incorporate custom Rig designs, cargo nets, high climbing towers and much more, our experienced team of specialists will help you design the ultimate outdoor training solution.

#### CUSTOM PROCESS INCLUDES:

- CONSULTATIVE REQUIREMENTS REVIEW
- SAMPLE DRAWINGS
- FEEDBACK AND ADJUSTMENTS
- CUSTOM BRANDING AND COLORS
- FINAL APPROVAL
- INSTALLATION



BeaverFit has developed fully customized Lockers to support the **Army's ACFT** and the **Marine Corps Force Fitness** program.

# LOCKER & RIG UPGRADES

## FEATURES & OPTIONS

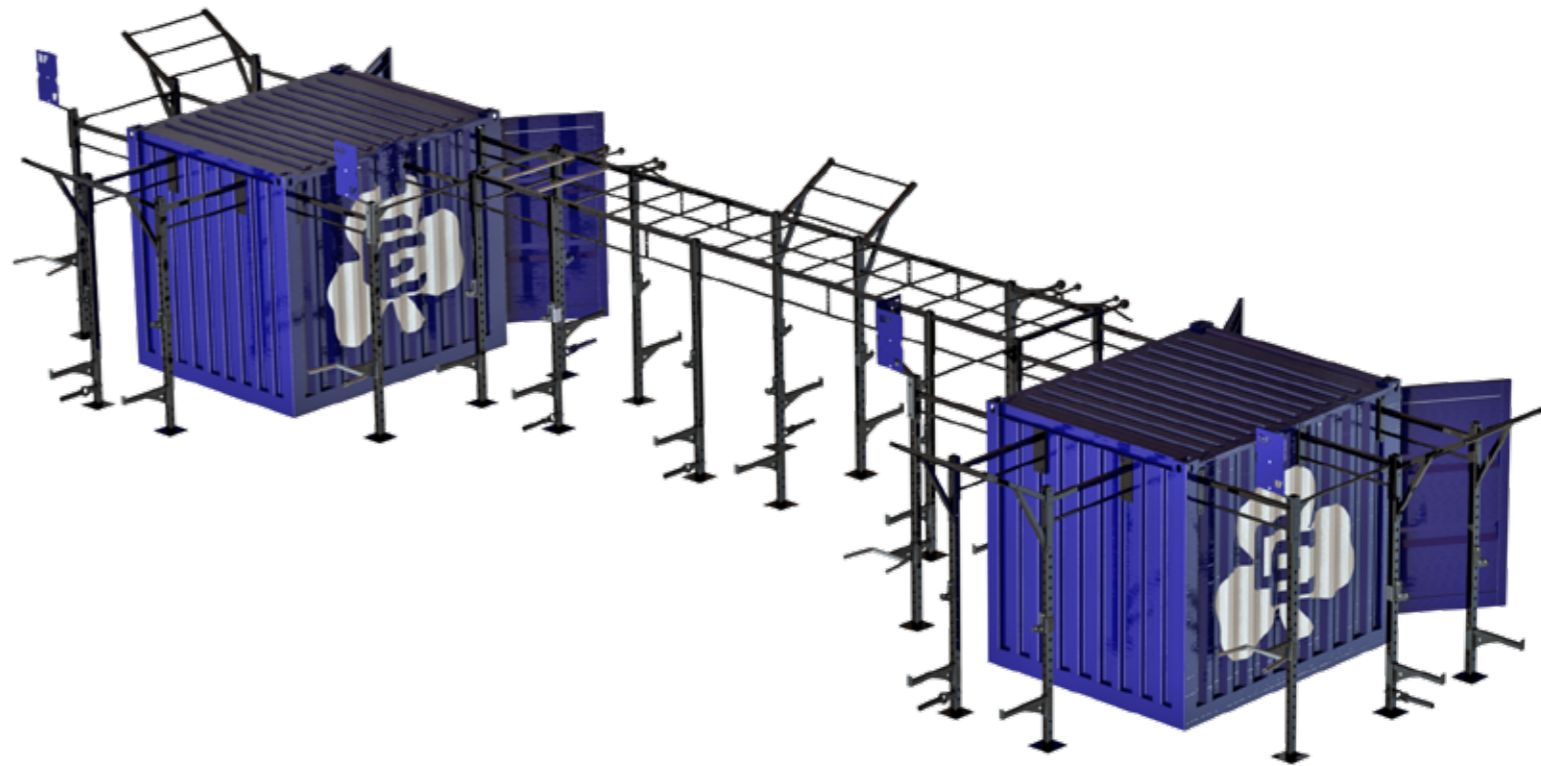
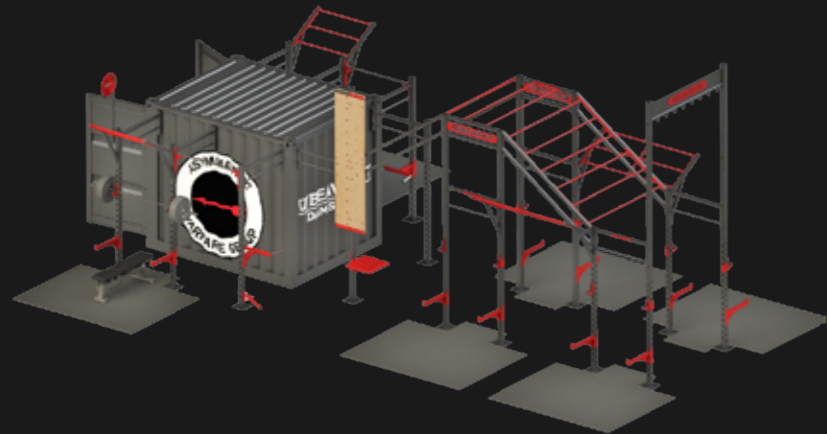
### OVERVIEW

The BeaverFit Performance Locker upgrades amplify your already extensive training environment.

Whatever your requirement or vision, our experienced team of professionals will work with you to bring your ideas to life.

### UPGRADES CAN INCLUDE

- Custom Branding / Colors
- Plexi Glass Walls
- Cargo Net Climb
- Stairs
- Rock Climb Wall
- Peg Board
- Ring Pegs
- Wall Ball Wall
- Heavy Bags
- Rope Climb Tower
- Soccer Nets
- Rebound Wall
- Warp Wall
- Trawlers





PREPARE .

TRAIN .

EXECUTE .

[BEAVERFIT.COM](http://BEAVERFIT.COM)

[#DAMSTRONG](https://twitter.com/DAMSTRONG)

BeaverFit is the global leader in indoor/outdoor, portable and customized functional fitness training solutions. BeaverFit products include integrated Rigs, Shipping Container Performance Lockers and unique Storage Solutions. Our mission is to solve training challenges, innovate through intelligent engineering and provide durable equipment that satisfies any and all performance goals.

**DAM STRONG**

#### **NORTH AMERICA**

BEAVERFIT USA  
120 WOODLAND AVE. SUITE D - RENO, NV USA  
TELEPHONE: +1 (775) 624-6307

#### **UK, EMEA, LATAM & APAC**

BEAVERSOE OLD MILL FARM  
WALKMILLS CHURCH STRETTON UK  
TELEPHONE: +44 (0) 1694 751265

#### **PATENTS & TRADEMARKS**

BEAVERFIT PRODUCTS ARE SUBJECT TO PATENTS AND/OR PATENT APPLICATIONS IN TERRITORIES AROUND THE WORLD. BEAVERFIT IS A REGISTERED TRADEMARK OF BEAVERFIT LTD AND ITS AFFILIATES ('BEAVERFIT') AROUND THE WORLD. ALL OTHER TRADEMARKS REFERENCED ARE TRADEMARKS OF THEIR RESPECTIVE OWNERS.

#### **QUALITY STANDARDS**

BEAVERFIT OPERATES A FULL QUALITY MANAGEMENT SYSTEM.  
180036-02 05/20

#### **DISCLAIMER**

THE INFORMATION CONTAINED IN THIS PUBLICATION IS INTENDED SOLELY TO PROVIDE GENERAL GUIDANCE. THE RIGHT IS RESERVED TO MAKE CHANGES TO THIS DOCUMENT WITHOUT NOTICE AT ANY TIME. THIS MATERIAL IS SUBJECT TO COPYRIGHT PROTECTION.